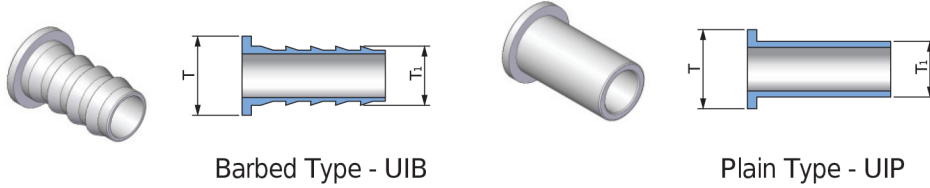


Tube Inset

UI



Barbed Type - UIB

Plain Type - UIP

Connects Fractional Tube

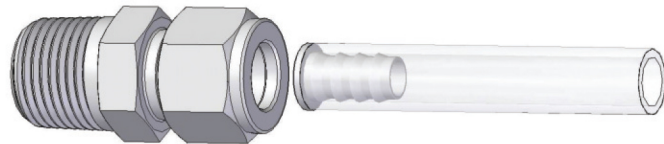
Part No.	Tube OD T		Tube OD T ₁	
	inch	mm	inch	mm
UI-0302	3/16	4.76	1/8	3.17
UI-0402	1/4	6.35	1/8	3.17
UI-0403	1/4	6.35	3/16	4.76
UI-0502	5/16	7.93	1/8	3.17
UI-0503	5/16	7.93	3/16	4.76
UI-0504	5/16	7.93	1/4	6.35
UI-0603	3/8	9.52	3/16	4.76
UI-0604	3/8	9.52	1/4	6.35
UI-0804	1/2	12.70	1/4	6.35
UI-0806	1/2	12.70	3/8	9.52
UI-1006	5/8	15.87	3/8	9.52
UI-1008	5/8	15.87	1/2	12.70
UI-1208	3/4	19.05	1/2	12.70
UI-1210	3/4	19.05	5/8	15.87
UI-1612	1	25.40	3/4	19.05

Connects Metric Tube

Part No.	Tube OD T	Tube OD T ₁
	mm	mm
UI-M06M04	6	4
UI-M08M06	8	6
UI-M10M08	10	8
UI-M12M08	12	8
UI-M12M10	12	10

Installation Instruction

Kor-Lok Inserts are used for Nylon, soft plastic tubing including PTFE and PFA as instructed below. The Insert supports the soft tubing internally and make them to be assembled to Kor-Lok port without any collapse.



1. Fully insert the soft tubing into Kor-Lok Insert.
2. Insert them into Kor-Lok port.
3. Finger-tighten the nut.
4. Tight the nut 1-1/4 turns with a wrench, holding the body with a backup wrench, or vice.

Note

In 3/16 Kor-Lok tube fittings, tighten 3/4 turn.